

Part#W-232/W-233: Door Latch and Knob Replacement

Rev. Date 7/23/2021

Parts Needed:

- (1) W-232 Knob part
- (1) W-233 Latch part
- (1) 1/8" x 7/8" Roll pin
- (1) Set screw
- (1) Nut

Tools Needed:

- 5/32" Hex key wrench
- 3/32" Hex key wrench
- PB Blaster or similar penetrating liquid
- Ball peen hammer
- 3/8" Wrench



1. Make sure the stove is cool.
2. Remove the door from the stove. Open the door fully and lift straight up. It may be helpful to move the door back and forth while lifting.



3. Place the door face down on a suitable work surface. Spray the set screw (on the side of the latch) with penetrating liquid to help loosen it. Do not spray liquid on the door stone (Keystone) as it may cause staining.



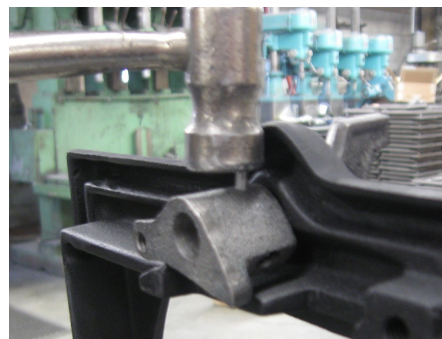
4. Use the allen wrench to loosen the set screw until the latch is free from the shaft on the knob. Remove knob from door.
 - a. If your latch is attached with a roll pin, use the replacement roll pin as a punch to remove the original. Line up the new pin with the old and tap it with a hammer using moderate, quick strikes. Once the old pin is part way out, pull it the rest of the way using pliers or vise grips. Pull the new pin out as well.



5. Place the shim from the old knob onto the shaft of the new knob and place knob in the door. The latch adjustment screw and lock nut should be at the top and against the stop on the inside of the door.



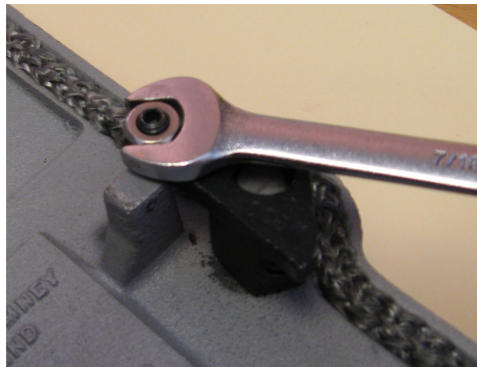
6. The new knob and latch have been pre-drilled, as a pair, to accept a roll pin, which will lock the two pieces together. Turn the knob to the full open position to expose the roll pin hole. Insert one end of the roll pin into the hole and carefully tap it through the assembly until the end of the roll pin closest to you is flush with the outside surface of the latch. (The flat spot in the knob should face the bottom of the door.)



7. Replace the door on the door frame. Align the pins in the door with the holes on the frame and press down until the door is fully seated.



8. If necessary, adjust the tension on the door by manipulating the latch adjustment screw and lock nut. Turn the screw clockwise for more tension and counter clockwise for less. Tighten the nut to lock it in place.



9. Enjoy your stove!

We need your help! Woodstock Soapstone Co. takes pride in providing the highest quality products as well as the best customer service in our industry. We welcome your suggestions and input to help us achieve these goals. If you have any comments to improve our products, service, and information provided in these instructions please contact us at (800) 866-4344 or info@woodstove.com. Thank you.