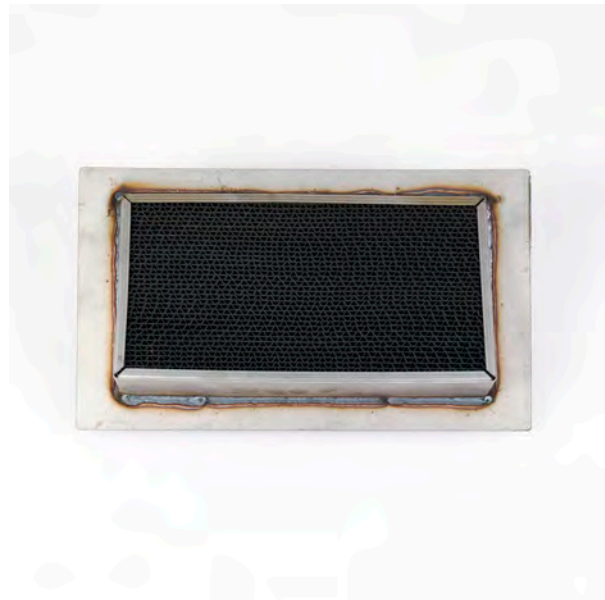


Part#K-535-SS: Ideal Steel 210 Catalytic Combustor Replacement

Rev. Date 7/27/2021

Parts Needed:
(1) K-530-SS

Tools Needed:
Helping Hand: for stoves with center burner



1. Make sure the stove is cool.
2. Lower the bypass handle into the closed position.

Closed position



3. If the stove has a center burner, use the helping hand (shipped with stove) to remove the center burner and set it aside.





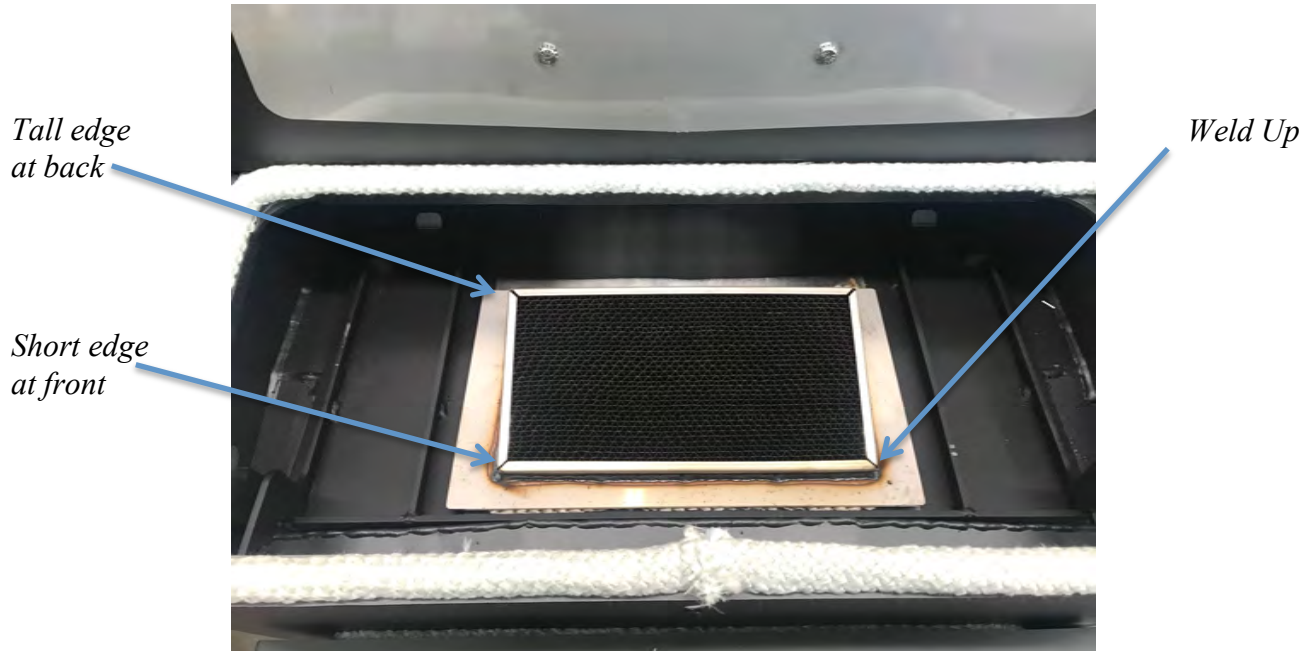
4. Lift the top lid and remove the radiator. The radiator shrouds the catalytic combustor.



5. Lift the catalytic combustor up and out of the stove. If you are replacing the gasket under the combustor, now is the time to proceed with that process.



6. Install the new combustor. Make sure the weld around the perimeter of the stainless steel flange is facing UP. The flange is welded around the combustor at an angle. The combustor should be installed so the face is directed forward with the short edge at the front, and the tall edge at the back. This position directs the heat produced by the catalyst forward.



7. Replace the radiator. The standoffs will go towards the back of the stove, and the radiator shield attachment will be at the front of the stove.



8. Close the top lid and replace the center burner.

9. Your stove is ready for immediate use.

We need your help! Woodstock Soapstone Co. takes great pride in providing the highest quality products as well as the best customer service in our industry. We welcome your suggestions and input to help us achieve these goals. If you have any comments to improve our products, service, and information provided in these instructions please contact us at (800) 866-4344 or info@woodstove.com. Thank you